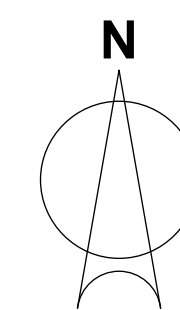
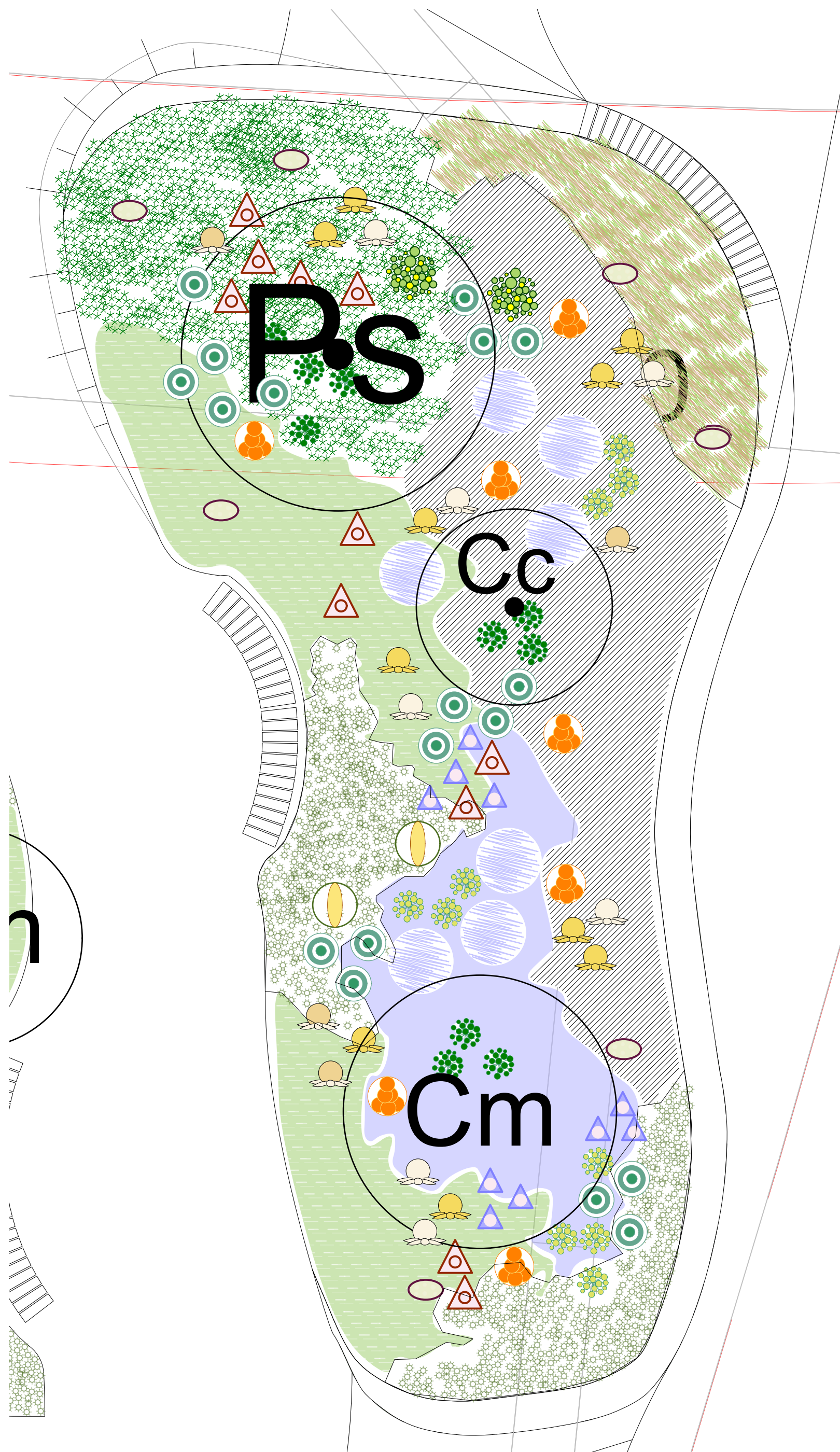
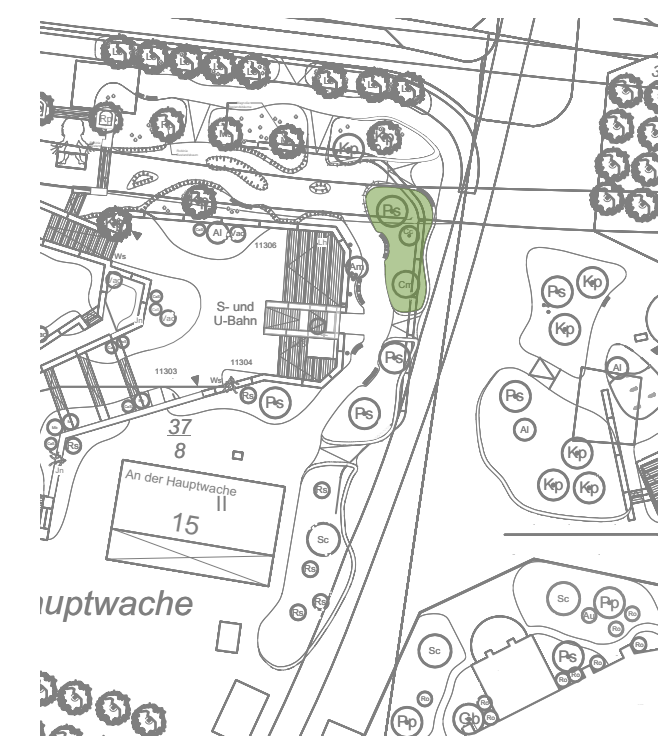


Beet 11203 der Hauptwache

Altes Neuland Frankfurt



M 1:50



Gehölze:

- Cc** *Cotinus coggygria*
- Cm** *Cornus mas*
- Ps** *Prunus subhirtella* 'Autumnalis'

Matrixarten

	<i>Acaena buchanaei</i>	III-IV	11/m ² <-> 30 cm
	<i>Eragrostis spectabilis</i>	I	10/m ² <-> 30cm
	<i>Geranium x cant.</i> 'Saint Ola'	II-III	10/m ² <-> 30 cm
	<i>Salvia nemorosa</i> 'Mainacht'	II	8 /m ² <-> 35 cm
	<i>Sesleria autumnalis</i>	I	6/m ² <-> 40 cm
	<i>Stipa tenuissima</i>	I-II	11/m ² <-> 30 cm

Leitstauden

	<i>Asphodeline lutea</i>	I	<-> 40 cm
	<i>Aster agerat.</i> 'Asran'	II	<-> 35 cm
	<i>Aster ericoides</i> 'Pink Cloud'	II	<-> 35 cm
	<i>Echinacea pur.</i> 'Harvest Moon'	II	<-> 35 cm
	<i>Echinacea purpurea</i> 'Alba'	II	<-> 40 cm
	<i>Echinacea purpurea</i> 'Sunrise'	II	<-> 35 cm
	<i>Kniphofia Hybride</i> 'Alcazar'	I	<-> 50 cm
	<i>Perovskia atriplicifolia</i> 'Filigran'	I	<-> 80 cm

Begeleitstauden

	<i>Euphorbia segu. ssp. niciana</i>	I	<-> 40 cm
	<i>Euphorbia amyg. var. robbiae</i>	I	<-> 40 cm
	<i>Sedum telephium</i> 'Matrona'	I	3er Tuffs <-> 35 cm
	<i>Sedum telephium</i> 'Herbstfreude'	I	3er Tuffs <-> 35 cm

Begeleitstauden

	<i>Centranthus ruber</i> 'Albus'	I	<-> 45 cm
	<i>Dianthus arenarius</i>	I-II	5/m ² nachträglich in Eragrostis-Matrix
	<i>Verbena bonariensis</i>	II	3/m ² nachträglich in Sesleria-Matrix