

Gehölz:

Ls Liquidambar styraciflua

Matrixart:

- Geranium x cantabrigiense 'Saint Ola' II-III 10/m² <-> 30 cm
- Eragrostis spectabilis I 10/m² <-> 30cm

Leitstaude:

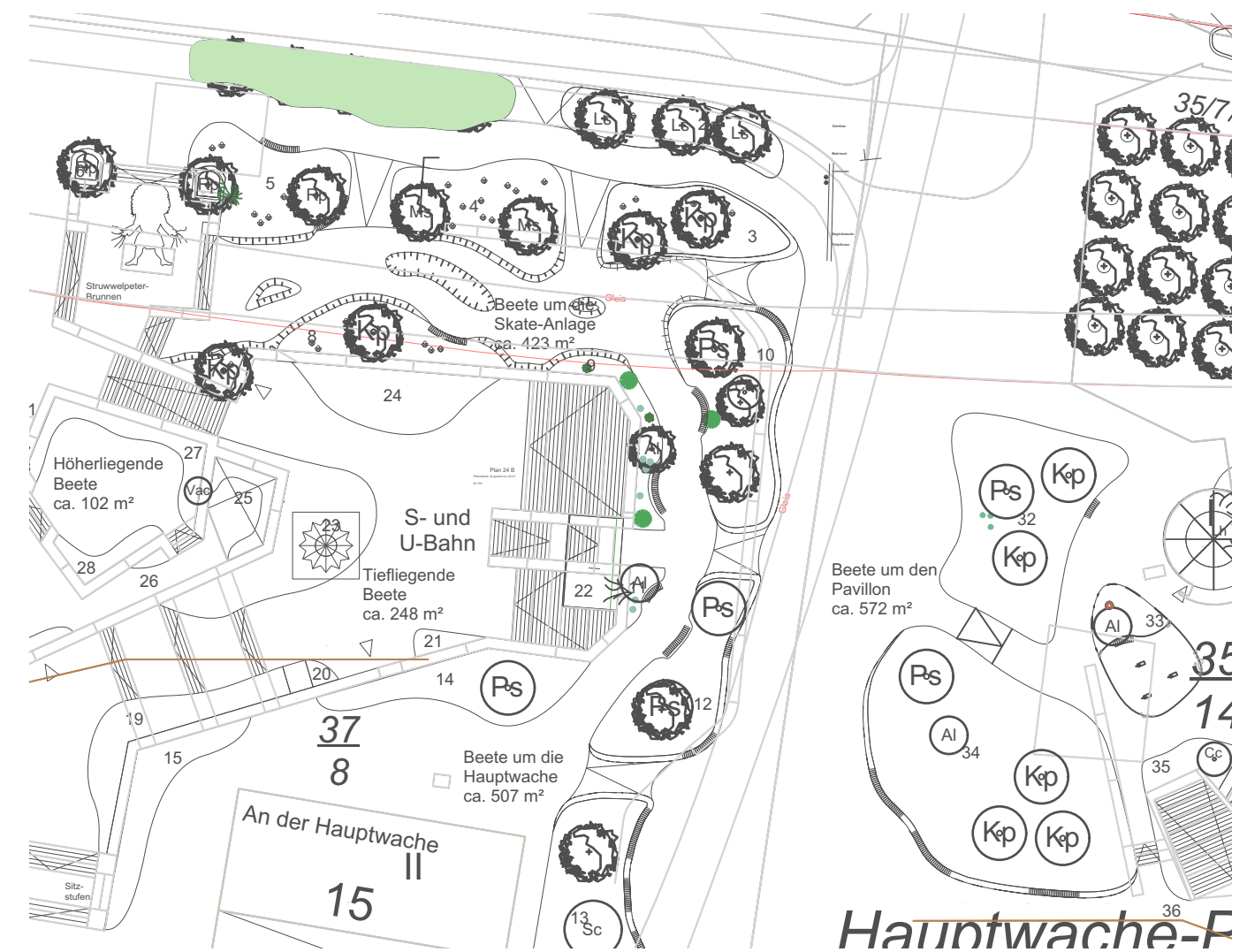
- Iris sibirica 'Caesar' I-II <-> 50 cm
- Iris sibirica 'Viel Schnee' I-II <-> 50 cm
- Festuca mairai I <-> 40 cm
- Echinacea purpurea 'Harvest Moon' II <-> 35 cm
- Echinacea purpurea 'Alba' II <-> 40 cm
- Echinacea purpurea 'Sunrise' II <-> 35 cm
- Papaver ori. 'Perrys White' I <-> 35 cm
- Allium sphaerocephalon II <-> 25 cm
- Coreopsis verticillata II <-> 35 cm
- Helianthus decapetalus 'Capenoch Star' II <-> 50 cm

Begleitstaude:

- Sedum telephium 'Matrona' I 3er Tuffs <-> 35 cm

Füllpflanze:

- Dianthus arenarius I-II 5/m² nachträglich in Eragrostis-Matrix



Hauptwache-F