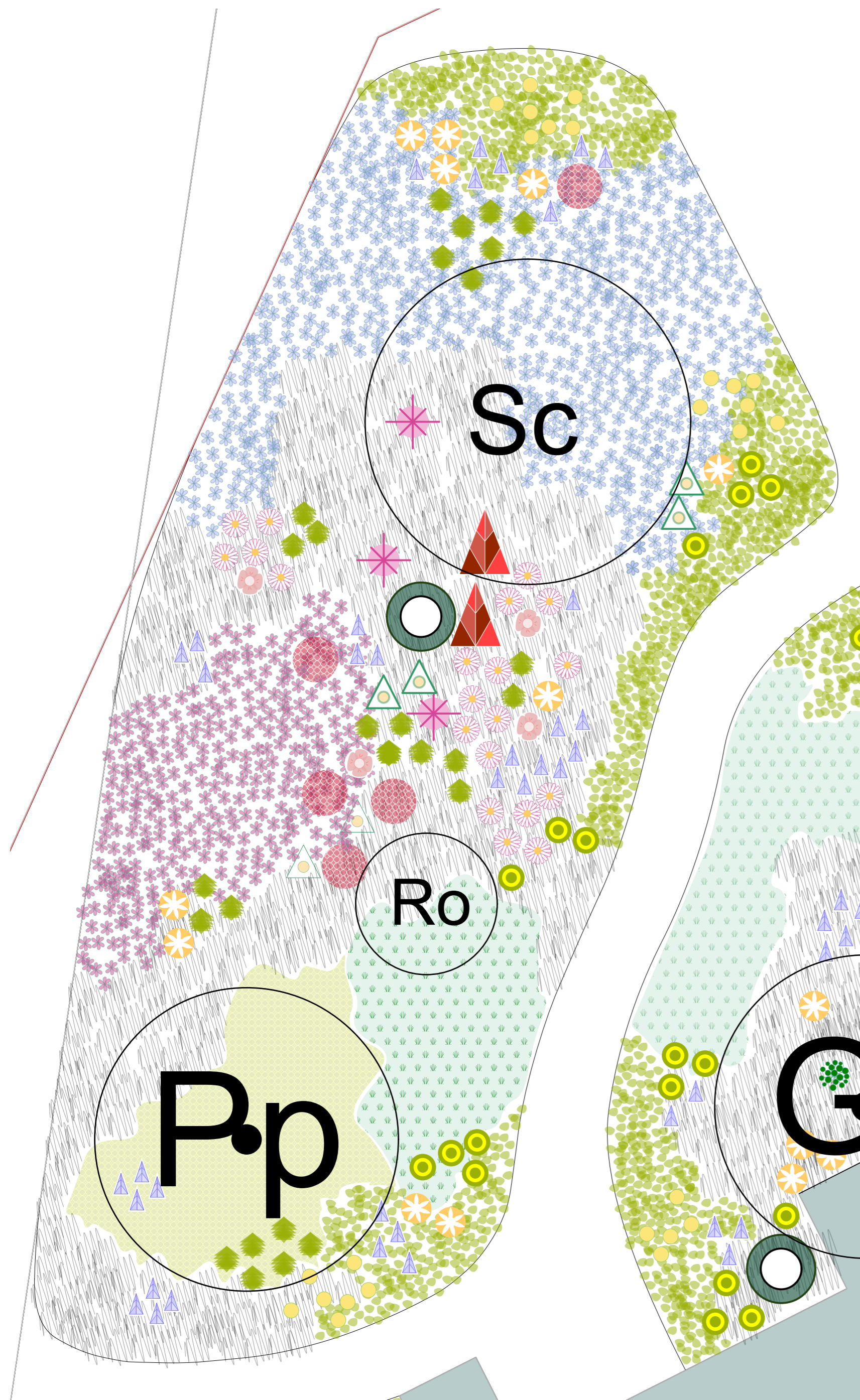


Beet 11005 der Hauptwache

Altes Neuland Frankfurt



Gehölze:

- Pp** *Parrotia persica* 'Vanessa', Eisenholzbaum
Ro *Rhododendron oreodoxa*, Rhododendron
Sc *Syringa x chinensis*, Chinesischer Flieder

Matrixarten

	<i>Alchemilla epipsila</i>	II-IV	11/m ² <-> 30 cm
	<i>Epimedium pin. ssp. 'Colchicum'</i>	II-III	11/m ² <-> 30 cm
	<i>Geranium gracile</i> -Hybride 'Sirak'	II-III	8/m ² <-> 35 cm
	<i>Geranium x cant. 'Berggarten'</i>	II-III	16/m ² <-> 25 cm
	<i>Hakonechloa macra</i>	I	6/m ² <-> 40 cm
	<i>Liriope muscari 'Big Blue'</i>	II	16/m ² <-> 25 cm

Leitstauden

	<i>Anemone hupehensis 'Ouvertüre'</i>	I-II	<-> 35 cm
	<i>Aruncus sylvestris</i>	I	<-> 100 cm
	<i>Aster divaricatus</i>	I-II	<-> 60 cm
	<i>Bistorta amplex. 'JS Caliente'</i>	I	<-> 90 cm
	<i>Centaurea dealbata 'Steenbergi'</i>	I-II	<-> 35 cm
	<i>Erigeron cu. 'Sommerneuschnee'</i>	II	<-> 35 cm
	<i>Physostegia virg. 'Bouquet Rose'</i>	II	<-> 30 cm <-> 40 cm

Begeleitstauden

	<i>Gillenia trifoliata</i>	I-II	<-> 40 cm
	<i>Primula elatior</i>	II	<-> 20 cm

Füllstaudenstauden

	<i>Campanula persicifolia</i> 'Grandiflora Coerulea'	II	<-> 30 cm
	<i>Corydalis lutea</i>	I-II	<-> 35 cm
	<i>Knautia macedonica</i>	I	<-> 60 cm

