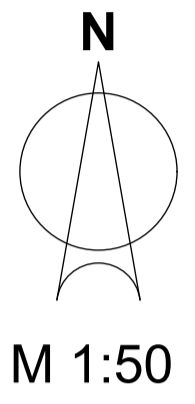
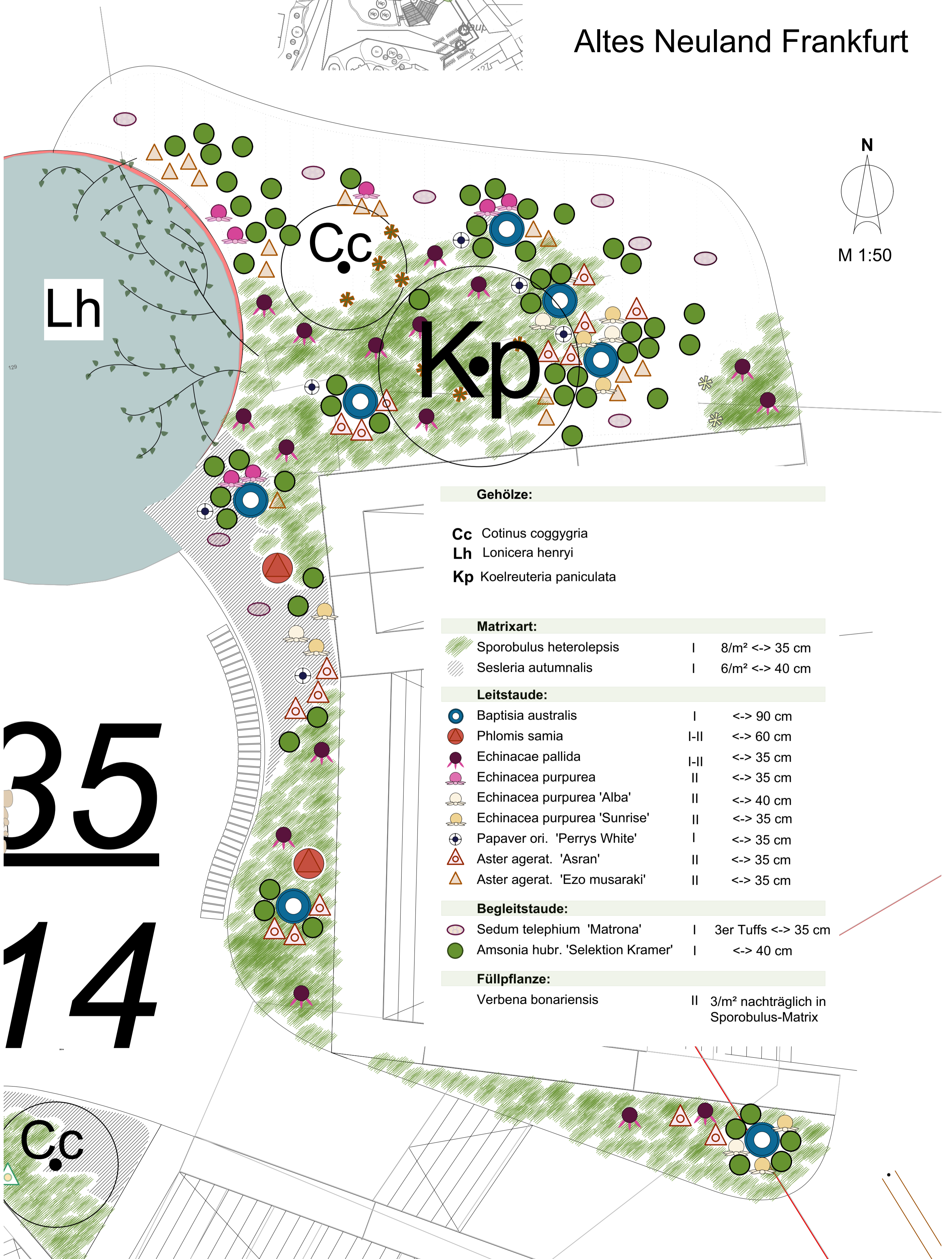


Beet 11104 der Hauptwache

Altes Neuland Frankfurt



Gehölze:

- Cc** *Cotinus coggygria*
- Lh** *Lonicera henryi*
- Kp** *Koelreuteria paniculata*

Matrixart:

- Sporobulus heterolepsis* | 8/m² <-> 35 cm
- Sesleria autumnalis* | 6/m² <-> 40 cm

Leitstaude:

- Baptisia australis* | <-> 90 cm
- Phlomis samia* | I-II <-> 60 cm
- Echinaceae pallida* | I-II <-> 35 cm
- Echinacea purpurea* | II <-> 35 cm
- Echinacea purpurea 'Alba'* | II <-> 40 cm
- Echinacea purpurea 'Sunrise'* | II <-> 35 cm
- Papaver ori. 'Perrys White'* | I <-> 35 cm
- Aster agerat. 'Asran'* | II <-> 35 cm
- Aster agerat. 'Ezo musaraki'* | II <-> 35 cm

Begleitstaude:

- Sedum telephium 'Matrona'* | I 3er Tuffs <-> 35 cm
- Amsonia hubr. 'Selektion Kramer'* | I <-> 40 cm

Füllpflanze:

- Verbena bonariensis* | II 3/m² nachträglich in Sporobulus-Matrix

35

14

