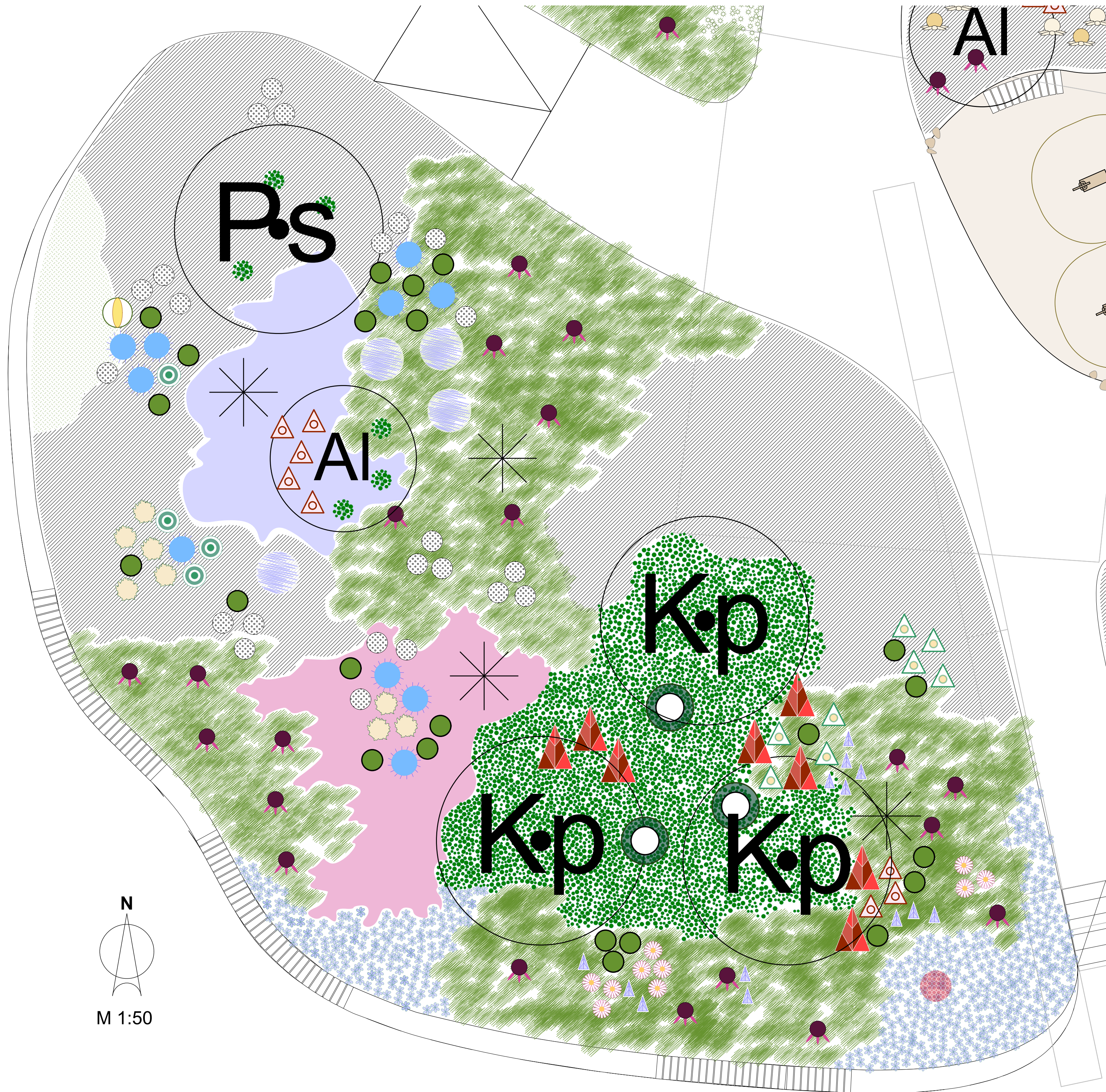


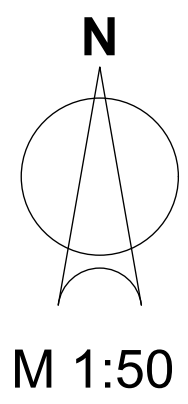
Beet 11101 der Hauptwache

Altes Neuland Frankfurt



Leitstauden und -gräser

	Aruncus sylvestris	I	<-> 100 cm
	Asphodeline lutea	I	<-> 40 cm
	Aster agerat. 'Asran'	II	<-> 35 cm
	Aster divaricatus	II	<-> 35 cm
	Bistorta amplex. 'JS Caliente'	I	<-> 90 cm
	Centranthus ruber 'Albus'	I	<-> 45 cm
	Echinacae pallida	I-II	<-> 35 cm
	Echinops ritro 'Veitch's Blue'	I-II	<-> 50 cm
	Erigeron 'Sommerneuschnee'	II	<-> 35 cm
	Miscanthus sinensis 'Graziella'	I	<-> 130 cm
	Perovskia atriplicifolia 'Filigran'	I	<-> 80 cm



Gehölze:

- Ai** Amelanchier laevis 'Ballerina', Felsenbirne
- Kp** Koelreuteria paniculata
- Ps** Prunus subhirtella 'Autumnalis'

Matrixarten

	Calamintha nepeta ssp. nepeta	I-II	8/m² <-> 35 cm
	Euphorbia amyg. var. robbiae	I	<-> 40 cm
	Geranium gracile-Hybride 'Sirak'	II-III	8/m² <-> 35 cm
	Salvia nemorosa 'Eos'	II	<-> 35 cm
	Salvia nemorosa 'Mainacht'	II	<-> 35 cm
	Sesleria autumnalis	I	6/m² <-> 40 cm
	Sporobolus heterolepsis		8/m² <-> 35 cm

Begeleitstauden

	Amsonia hubr. 'Selektion Kramer'	I	<-> 40 cm
	Anthemis tin. 'Sauce Hollandaise'	I-II	<-> 40 cm
	Euphorbia amyg. var. robbiae	I	<-> 40 cm
	Gaura lind. 'Whirling Butterflies'	II	<-> 40 cm

Füllstaudenstauden

	Campanula persicifolia 'Grandiflora Coerulea'	II	<-> 30 cm
	Knautia macedonica	I	<-> 60 cm

